

Mental Health Matters **OUTCOMES: Organizing and Unifying to Collaborate on Mental Health in Educational Systems**

Keylee Wright- The Kendrick Foundation

Liz Stirn- Adult & Child Health

Kelsey Balch – Adult & Child Health

Kristin Everett- Adult & Child Health

Kari Mann – Adult & Child Health

Elizabeth Christmas – Youth First



Learning outcomes:

1. Participants will understand the importance of foundational relationships established in partnership with the local community mental health center in the school setting, Kendrick Foundation, and community organizations in Morgan Co.

2. Participants will learn steps taken to alleviate barriers and increase access to mental health care in the school setting: how we strategized ways to increase services to students.

3. Participants will learn how we have identified ways to decrease risk factors, increase protective factors, and improve overall health to the students enrolled in Morgan Co. schools.

4. Participants will gain an appreciation of positive relationships within school-based mental health services.



Quick Mental Health Overview

Research indicates that as many as 1 in 17 people (about six percent), or more than 380,000 Hoosiers, are living with a serious mental illness (SMI) like schizophrenia, bipolar disorder, major depression, or post-traumatic stress disorder (PTSD). These brain disorders can be debilitating and substantially affect the lives of individuals, families and our communities (namiindiana.org)

Local Community Mental Health Centers, private practice agencies, hospitals, and for-profit centers offer supportive services to children and adults struggling with mental health needs and will link individuals to outside resources.



Kendrick Foundation

Leading health initiatives for
Morgan County

- History
- Mission
- Strategic Areas
 - Scholarships
 - Community Leadership
 - Grantmaking





County Health Rankings & Roadmaps

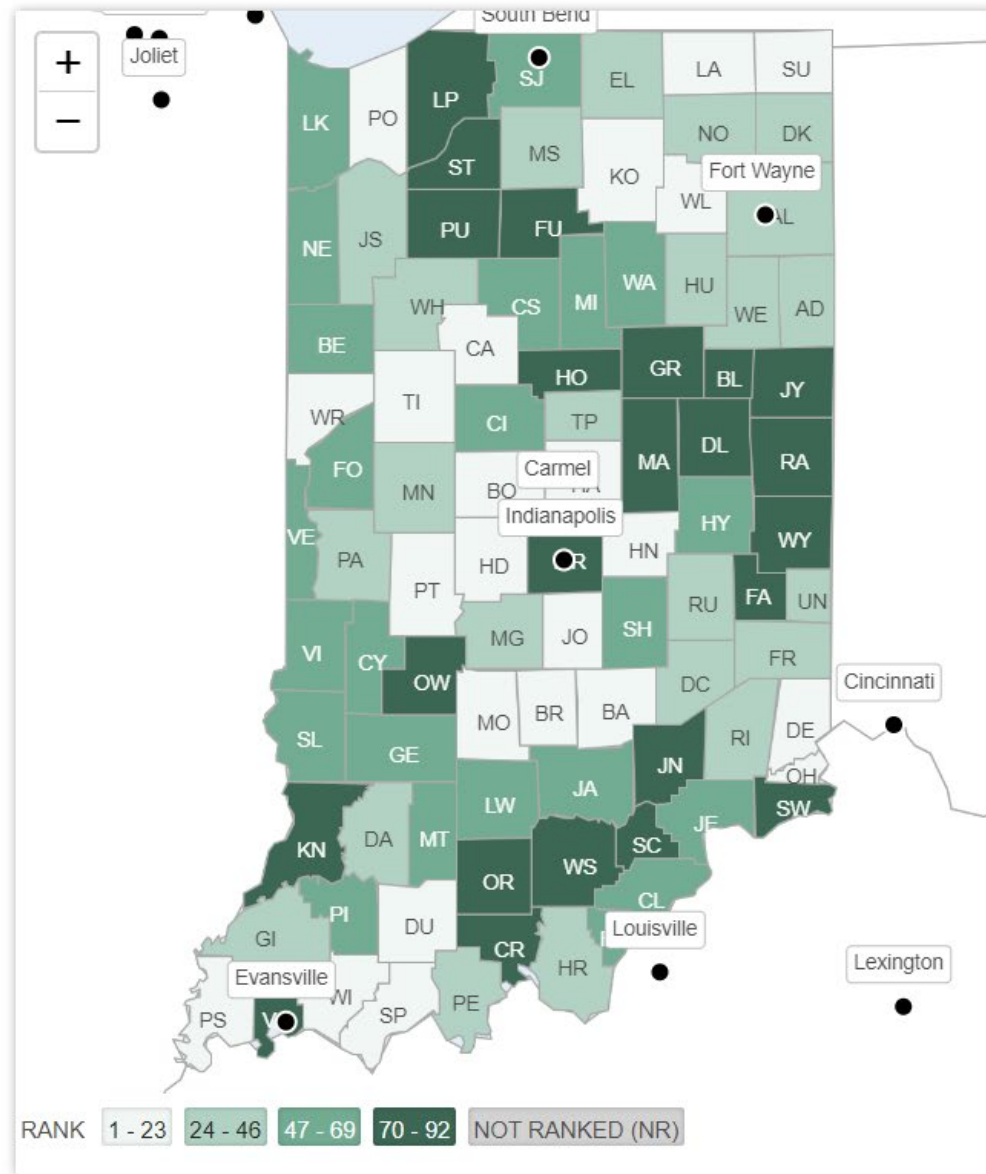
Video available at <https://www.youtube.com/watch?v=RZjV2ZlrfGQ>



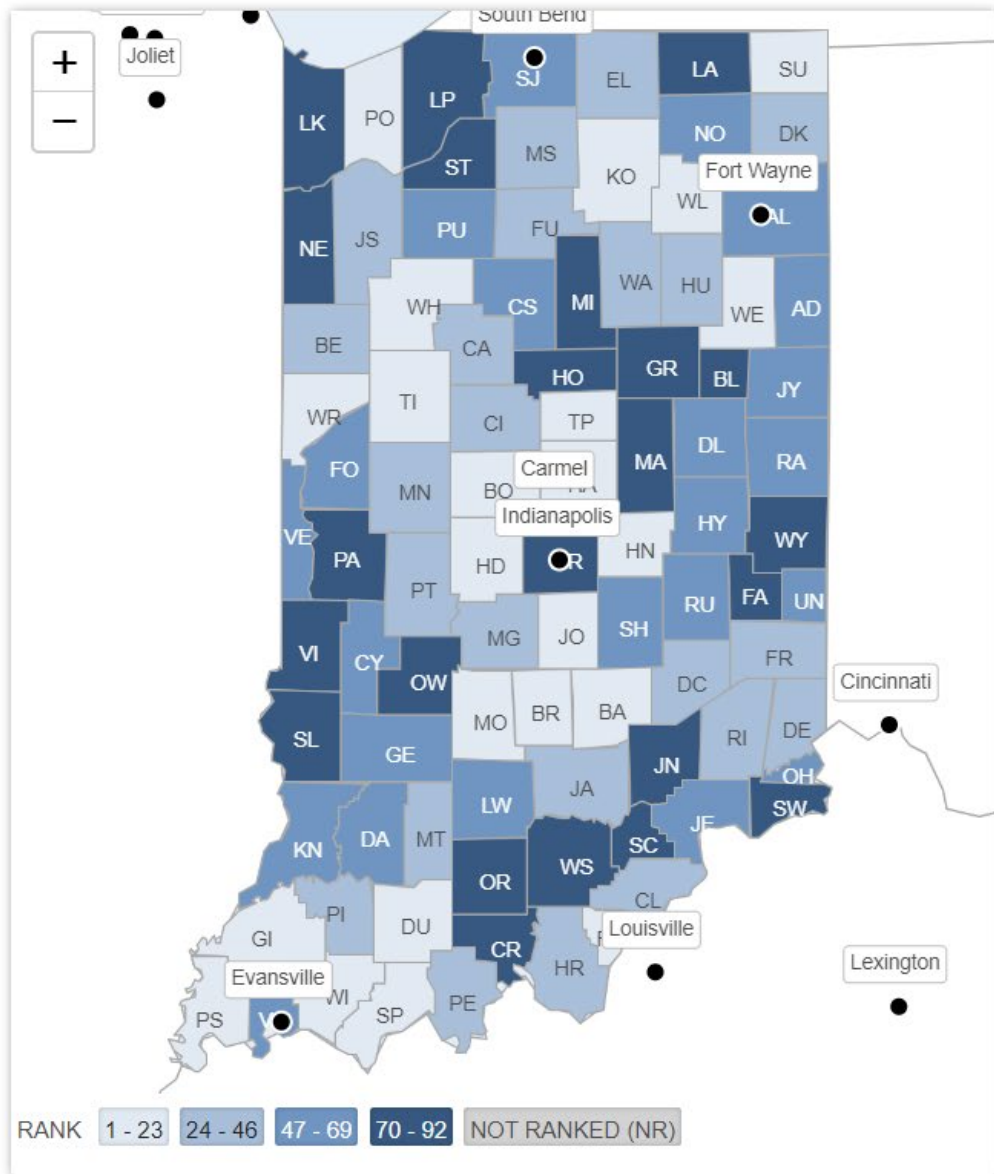
2022 County Health Rankings & Roadmaps

Morgan County, IN

Overall Rankings in Health Outcomes



Overall Rankings in Health Factors



Data and image from the 2022 [Robert Wood Johnson Foundation County Health Rankings](https://www.countyhealthrankings.org/app/indiana/2022/overview)
<https://www.countyhealthrankings.org/app/indiana/2022/overview>

OVERALL RANKINGS (1 is healthiest)

Health Outcomes: 41/92

(Life expectancy, premature death, poor physical health or mental health days, child/infant mortality, etc.)

Health Factors: 30/92

(Smoking, obesity, physical inactivity, access to exercise opportunities, food insecurity, health providers, etc.)



Morgan County Demographics

	Morgan County	Indiana
Population	70,707	6,754,953
% Below 18 Years of Age	22.2%	23.2%
% 65 and Older	17.8%	16.5%
% Non-Hispanic Black	0.6%	9.7%
% American Indian and Alaskan Native	0.4%	0.4%
% Asian	0.7%	2.7%
% Native Hawaiian/Other Pacific Islander	0.1%	0.1%
% Hispanic	1.8%	7.4%
% Non-Hispanic White	95.5%	78.0%
% Rural	49.1%	27.6%



Data from the 2022 [Robert Wood Johnson Foundation County Health Rankings](https://www.countyhealthrankings.org/app/indiana/2022/rankings/morgan/county/outcomes/overall/snapshot)
<https://www.countyhealthrankings.org/app/indiana/2022/rankings/morgan/county/outcomes/overall/snapshot>

Morgan County Demographics

	Morgan County	Indiana	Top 10% US Performers
Life Expectancy	76.1	76.5	80.6
Unemployment	5.4%	7.1%	4.0%
Median Household Income	\$67,000	\$60,800	\$75,100
Premature Death <small>Years of potential life lost before age 75 per 100,000</small>	8,300	8,600	5,600
Preventable Hospital Stays <small>Rate of hospital stays per 100,000 Medicare enrollees</small>	3,041	4,322	2,233
Primary Care Physician Ratio	2,350:1	1,490:1	1,010:1
Mental Health Provider Ratio	1,470:1	560:1	250:1
Uninsured	10%	10%	6%



Data from the 2022 [Robert Wood Johnson Foundation County Health Rankings](https://www.countyhealthrankings.org/app/indiana/2022/rankings/morgan/county/outcomes/overall/snapshot)
<https://www.countyhealthrankings.org/app/indiana/2022/rankings/morgan/county/outcomes/overall/snapshot>

Morgan County Health Behaviors

	Morgan County	Indiana	Top 10% US Performers
Adult Smoking	21%	20%	15%
Adult Obesity	36%	35%	30%
Food Insecurity	12%	12%	9%
Physical Inactivity	32%	31%	23%
Access to Exercise Opportunities	49%	68%	86%
Excessive Drinking	18%	18%	15%
Alcohol-Impaired Driving Deaths	15%	19%	10%
Limited Access to Healthy Foods	6%	9%	2%
Drug Overdose Deaths Number of drug poisoning deaths per 100,00	34	28	11



Data from the 2022 [Robert Wood Johnson Foundation County Health Rankings](https://www.countyhealthrankings.org/app/indiana/2022/rankings/morgan/county/outcomes/overall/snapshot)
<https://www.countyhealthrankings.org/app/indiana/2022/rankings/morgan/county/outcomes/overall/snapshot>

DEATHS BY INTENTIONAL SELF-HARM

MORGAN COUNTY

22.4 DEATHS PER 100,000 RESIDENTS

INDIANA

14.1 DEATHS PER 100,000 RESIDENTS

**16% OF MORGAN
COUNTY ADULTS
REPORT FREQUENT
MENTAL DISTRESS**

**MENTALLY UNHEALTHY DAYS
EACH MONTH
FOR ADULTS IN MORGAN COUNTY**

5.1



Kendrick Foundation

Data from the 2022 [Robert Wood Johnson Foundation County Health Rankings](#) and [Indiana Prevention Resource Center](#), 2021

Opioid Prescription Dispensations

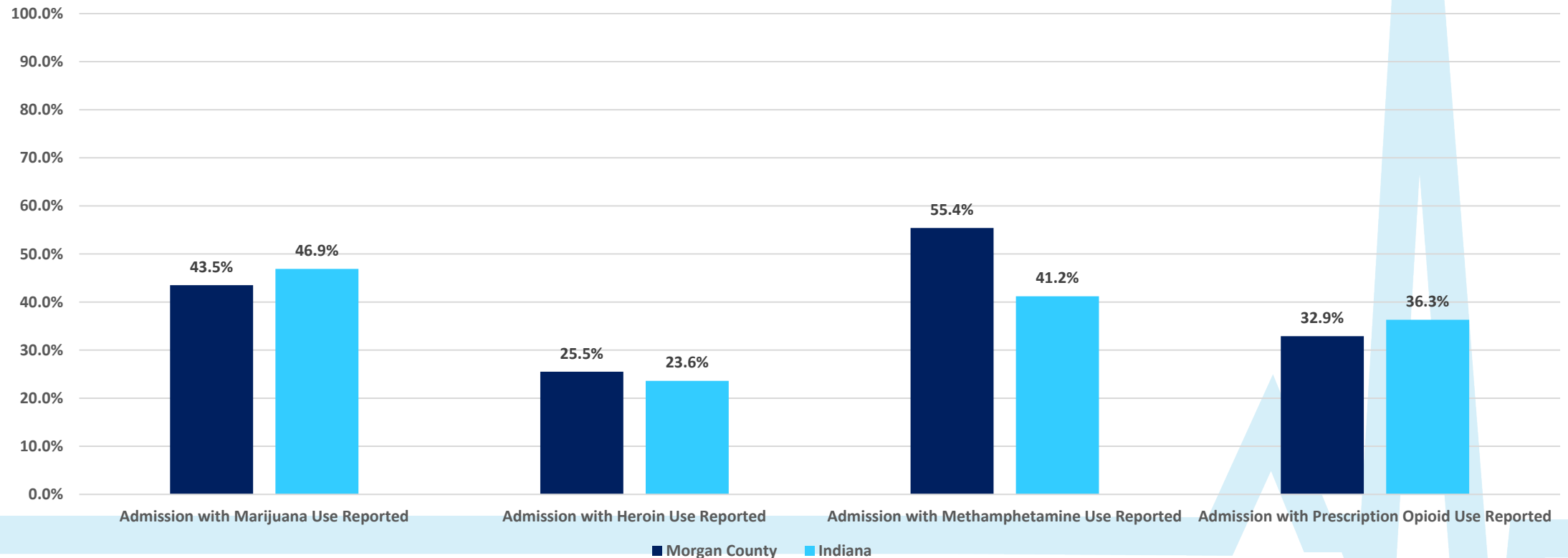
	Morgan County	Indiana
Number of Opioid Prescriptions Dispensed	52,892	3,713,292
Rate per 1,000 Population	750	552



Data from the [Indiana Prevention Resource Center](https://iprc.iu.edu/epidemiological-data/epi_table.php?table_id=t606&v_order=1&county=55), 2020
https://iprc.iu.edu/epidemiological-data/epi_table.php?table_id=t606&v_order=1&county=55

Substance Use Treatment in Morgan County

PERCENTAGE OF ADMISSIONS TO STATE-FUNDED SUBSTANCE USE TREATMENT FOR VARIOUS SUBSTANCES REPORTED

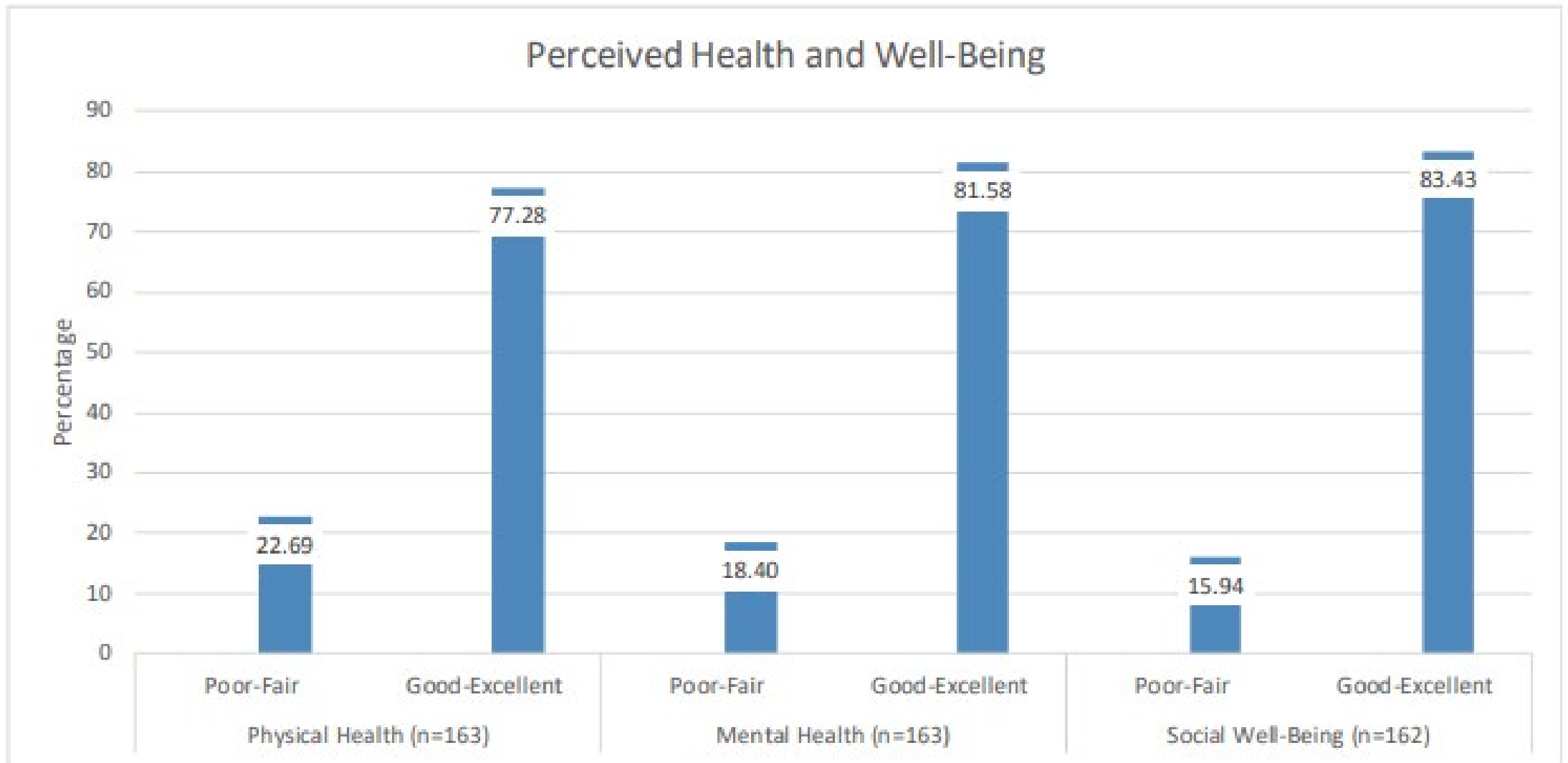


Data from the [Indiana Prevention Resource Center](https://iprc.iu.edu/epidemiological-data/epi_table.php?table_id=t901&v_order=1&county=55), 2020
https://iprc.iu.edu/epidemiological-data/epi_table.php?table_id=t901&v_order=1&county=55

Franciscan Health Community Health Needs Assessment

- 2022-2024 Report
- Data Collection Method:
 - Two Surveys
 1. One survey sent to partner organizations to determine community capacity and gaps in safety net
 2. Second survey convenience sampled the general community, with emphasis on vulnerable populations.
 - ~163 respondents





The convenience sample data reported included responses from targeted vulnerable populations within the community. Participants were asked to report their perceived health and well-being.



Data from [Franciscan Health's Community Health Needs Assessment 2022 – 2024 Report](#)

Missing Healthcare Services

Response	Number	Percentage
Chronic disease care	48	29.44%
Acute care, like for an injury or infection	27	16.56%
Vaccines or health screenings	18	11.04%
General primary care	43	26.38%
Prenatal or well-baby care	17	10.42%
Hospital emergency room/Urgent center care	30	18.40%
Pharmacy/Drug store	13	7.97%
Dental care	17	10.42%
Screening for anxiety or depression	50	30.67%
Treatment for mental health	56	34.35%
Treatment for an addiction	42	25.76%
Vision or hearing care	27	16.56%

Participants were asked what type of healthcare related services are missing in their community.



Data from [Franciscan Health's Community Health Needs Assessment 2022 – 2024 Report](#)

Healthcare Obstacles

What prevents you from getting the health care you feel you need? (Select all that apply.)		
	Number	Percentage
Cultural/religious beliefs	5	3.06%
Do not know how to find the type of doctor I want	25	15.33%
Fear (e.g., not ready to face/discuss health problem)	35	21.47%
I cannot get an appointment when I am available	48	29.44%
Language barriers	1	0.61%
Immigration status	1	0.61%
No insurance and unable to pay for the care	9	5.52%
Unable to pay co-pay/deductibles	21	12.88%
Transportation	18	11.04%
Lack of access to a computer	10	6.13%
Bad past medical experience	29	17.79%

In an effort to better understand hesitancy or access to medical care, a question was asked on barriers.



Top Health Needs

Social Needs	Poor Health Behaviors	Poor Health Outcomes
Access to Primary Care	Violence	Motor Vehicle Deaths
Behavioral Health	Tobacco	Cardiovascular Disease
Social Cohesion	Physical Activity	Respiratory Disease
Child Insurance	Substance Abuse	Cancer (breast, lung, prostate
Housing		Diabetes
Food Insecurity		Obesity
Education		Digestive Diseases

Franciscan Health determined the top health needs by reviewing secondary data, survey responses, and feedback meeting input. Once a refined list of the top ten issues was brought to consensus, each staff member ranked health issues based on the following criteria: Size: How many people are affected by this issue? Seriousness: How serious of an issue is this? Is it potentially deadly? How much of a threat is it to the population that is affected? Equity: How much does this affect the most vulnerable residents? Because of this, does it put those who are affected at a serious disadvantage? Intervention: How likely is it that a non-clinical intervention will change this need? Time: How urgent or pressing is this? Is there imminent danger or life-threatening consequences within months?



Data from [Franciscan Health's Community Health Needs Assessment 2022 – 2024 Report](#)

MHA Data Based on Mental Health Risk Assessments

	State Rank (1 is highest)	State Level Individuals per 100k	Morgan Ct. Individuals per 100k	Total Responses
Depression	1	84.2	76.6	154 (50 scoring severe depression)
Frequent Suicide Ideation	2	82.6	68.9	153 (45 reporting frequent suicide ideation)
Trauma Survivors	3	149.8	147	96 (self-identified as trauma survivors)
PTSD	4	44.0	50.5	34 (33 scoring positive for PTSD)
Psychosis	5	58.0	64.3	51 (42 scoring at risk for psychotic-like experience)



Data from [Mental Health America: https://mhanational.org/mha-state-county-data](https://mhanational.org/mha-state-county-data)

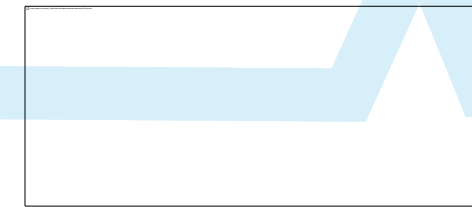
2022-23 Competitive Grant Cycle

Seeking to partner with strong community organizations implementing scientifically supported and some evidence strategies as outlined in the County Health Rankings & Roadmaps [What Works for Health](#) to address three focus areas:

- Mental health
- Substance misuse
- Physical activity and nutrition



2021-22 Competitive Grantees



School-based Mental Health Initiative

- Special three-year project
- Collaborative partners
 - Adult & Child Health
 - Centerstone
 - Mooresville Consolidated School Corporation
 - MSD of Martinsville
 - Monroe-Gregg School District
 - Eminence Community Schools



#HEREFORMORGANCOUNTY

**Kendrick Foundation
Kicks off three-year
SPECIAL MENTAL
HEALTH INITIATIVE
in Morgan County schools!**



**A collaborative effort to support
the mental health and wellbeing
of Morgan County residents**

A Few Things We Want To Address:

- **WHY?** Is there a Problem?
- **WHAT?** Do we contribute and offer? How do we build strong partnerships in schools and build trust?
- **WHO?** Collaborative partners
- **WHERE** are we going?
 - Navigation
 - Delegation
 - Increase interactions with community resources/partners



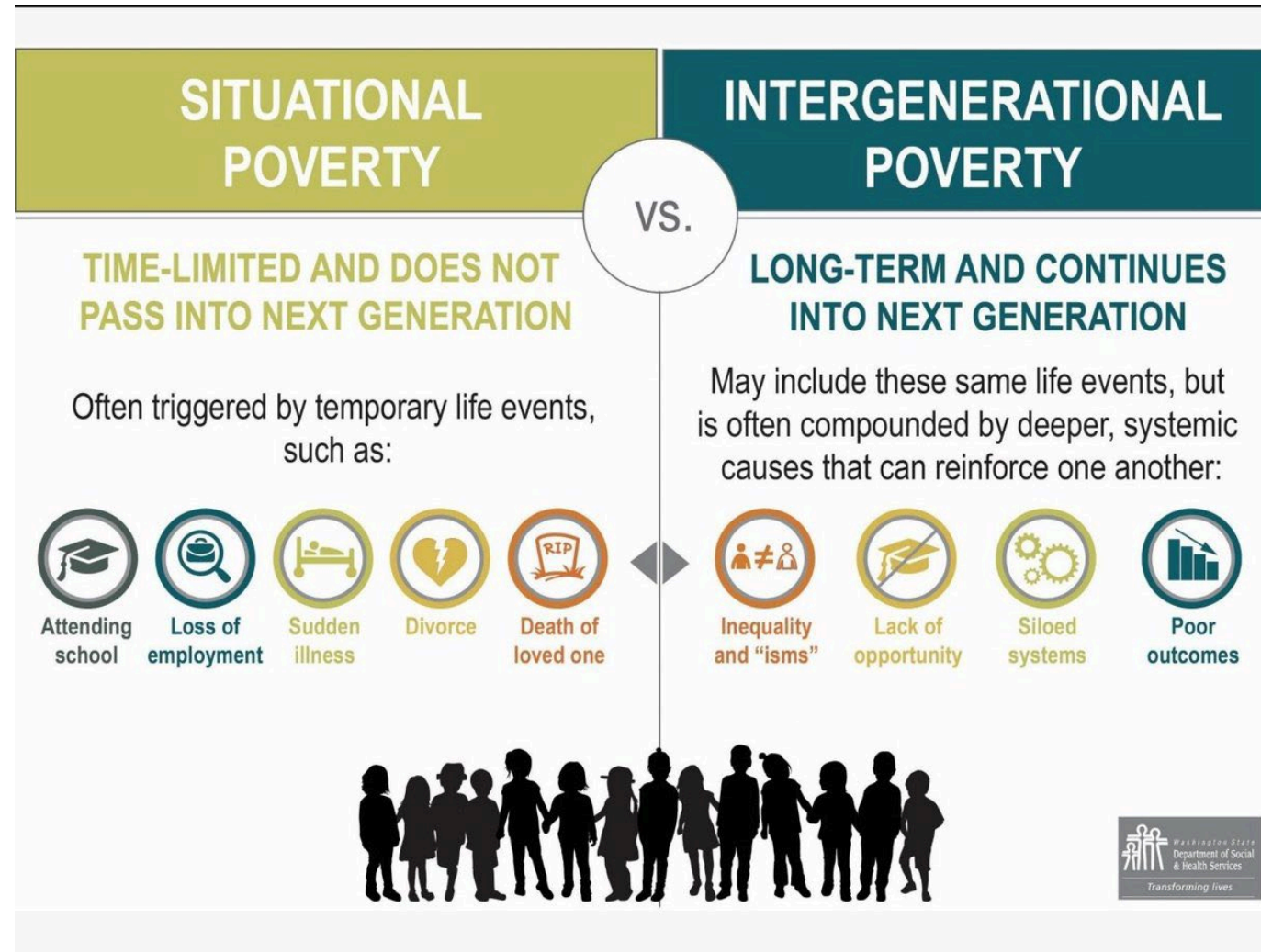
EDUCATION DECREASES
STIGMA

#MYMENTALHEALTHSTORY

[HTTPS://YOUTU.BE/AI_7CTY8V3W](https://youtu.be/AI_7CTY8V3W)

STOP STIGMA

*Generational
Poverty:
How Does this
impact the needs
of a community?*



Forging on
during
difficult
times...

