





Thrive Orange Co

A REAL -LIFE EXAMPLE OF GRASSROOTS COMMUNITY COALITION
BUILDING

A PRESENTATION BASED ON THE THRIVE ORANGE COUNTY INITIATIVE

BRANDY TERRELL, MSW, DSW, LCSW

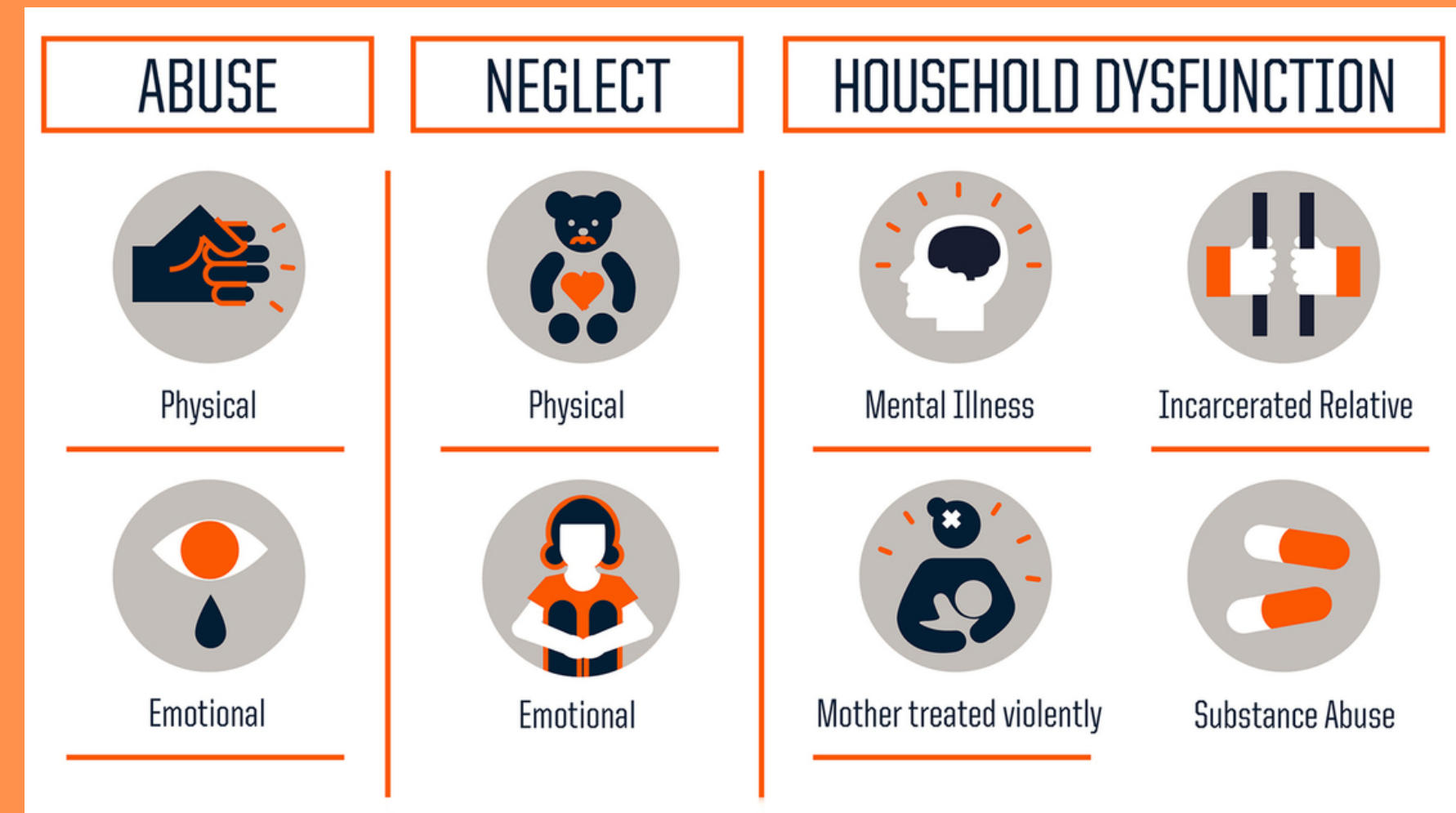
SOUTHERN INDIANA COMMUNITY HEALTH CARE (SICHC) / THRIVE OC

Dr. Terrell is Chair of Thrive Orange County under the enabling services program at Southern Indiana Community Health Care. She practices grassroots community organizing, building trauma-informed care frameworks within community and workforce settings. Additionally, Dr. Terrell builds lasting relationships with community members and encourages and supports coalitions that address Social Determinants of Health. She's a board member for Team OC, Inc. and Team Peace, Inc. and chairs the Orange County Commissioner's Substance Treatment Advisory Committee. She received her Doctor of Social Work degree from Spalding University in May 2023. She is an Indiana Licensed Clinical Social Worker with 20+ years of clinical experience and is trained in Trauma-Focused-Cognitive Behavioral Therapy (TF-CBT) and Eye Movement Desensitization and Reprocessing (EMDR).



Adverse Childhood Experiences

Adverse Childhood Experiences (ACEs) are potentially traumatic events that occur in childhood. ACEs can include violence, abuse, and growing up in a family with mental health or substance use problems. Toxic stress from ACEs can change brain development and affect how the body responds to stress. ACEs are linked to chronic health problems, mental illness, and substance misuse in adulthood. However, ACEs can be prevented. (Vital Facts Sheet, CDC)

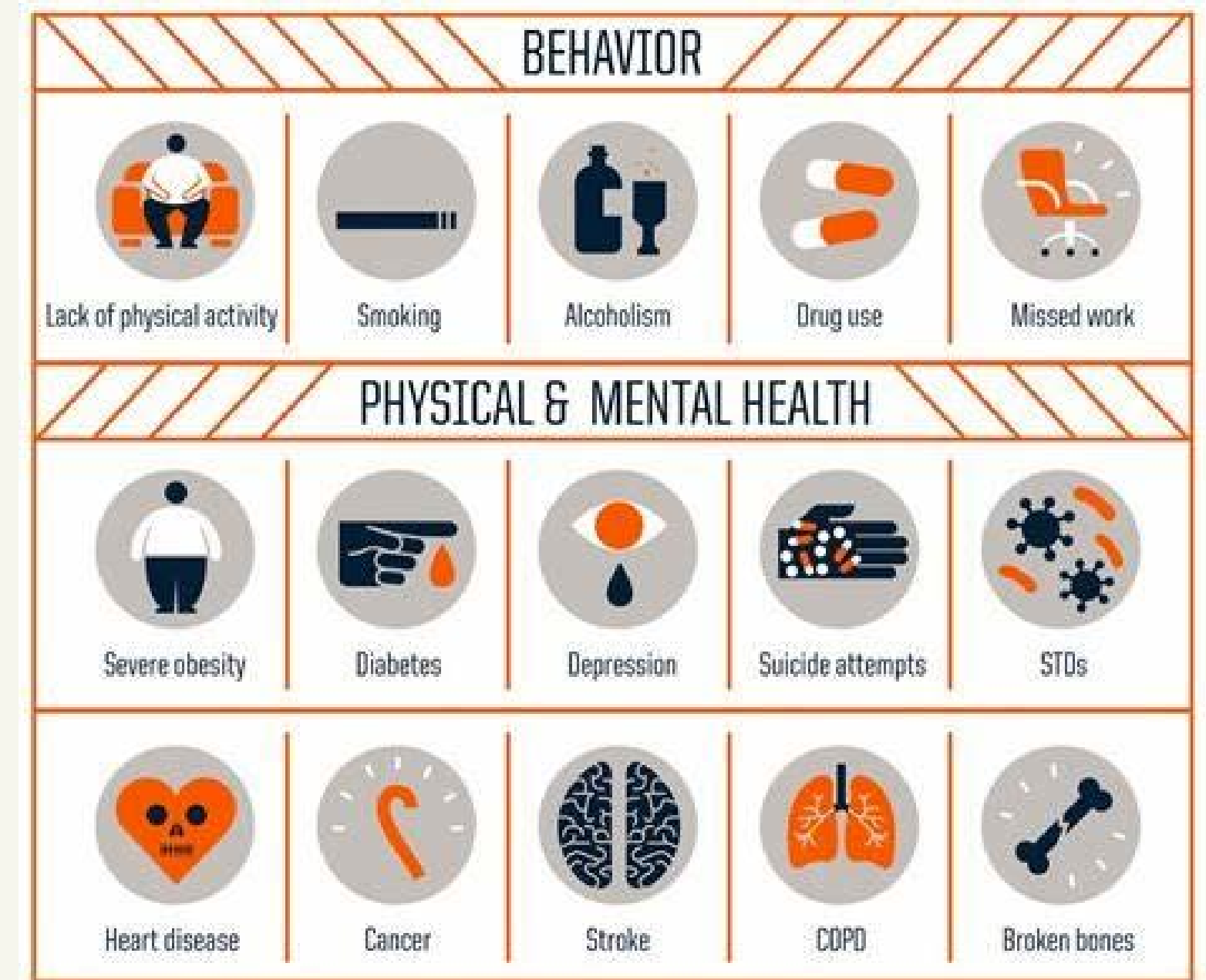


NATIONAL DATA:

Adverse Childhood Experiences impact lifelong health and opportunities.

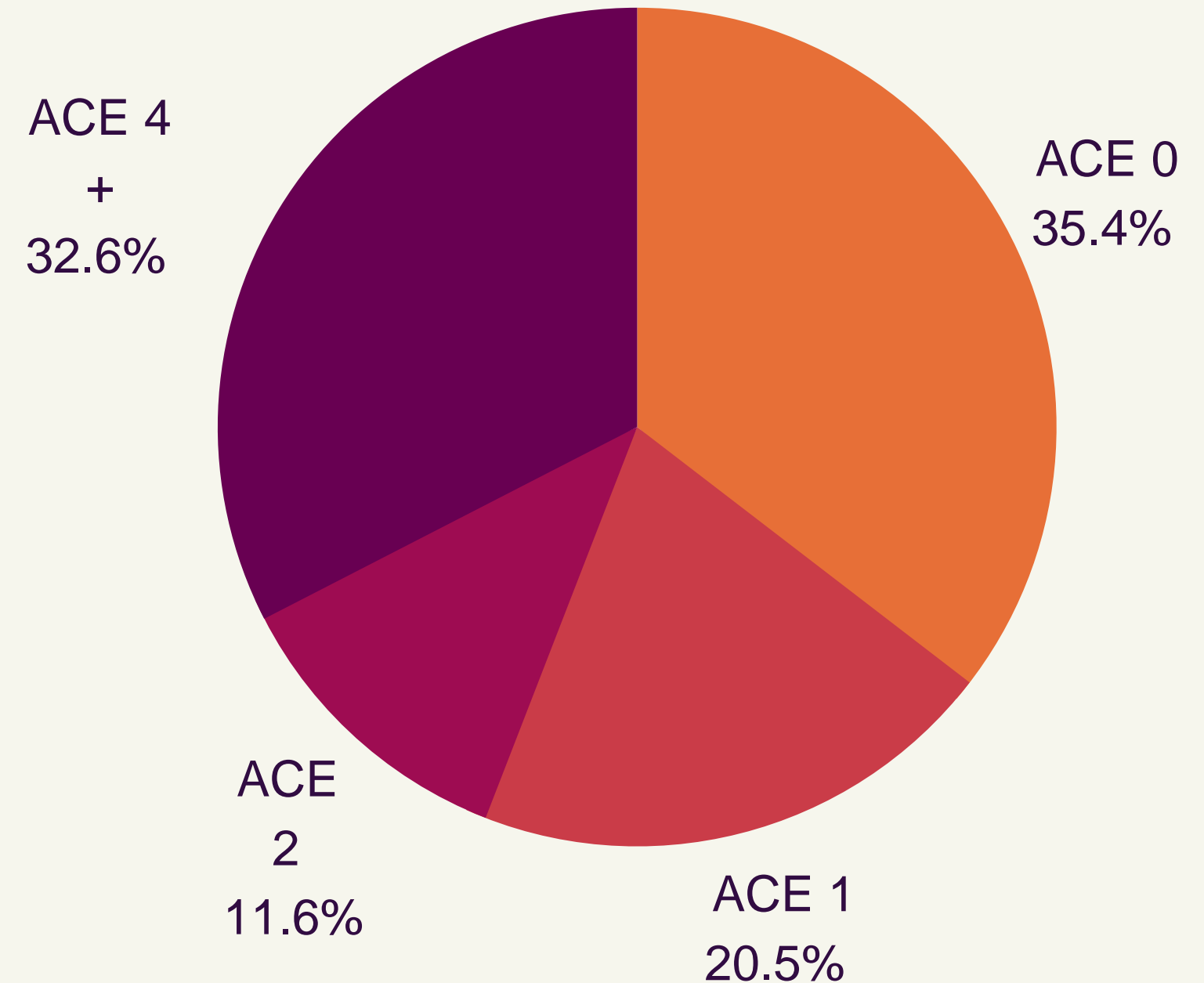
ACEs are common, and the effects can add up over time.

- 61% of adults had at least one ACE, and 16% had 4 or more types of ACEs.
- Females and several racial/ethnic minority groups were at greater risk for experiencing 4 or more ACEs.
- Many people do not realize that exposure to ACEs is associated with an increased risk for health problems across the lifespan.
- At least 5 of the top 10 leading causes of death are associated with ACEs.



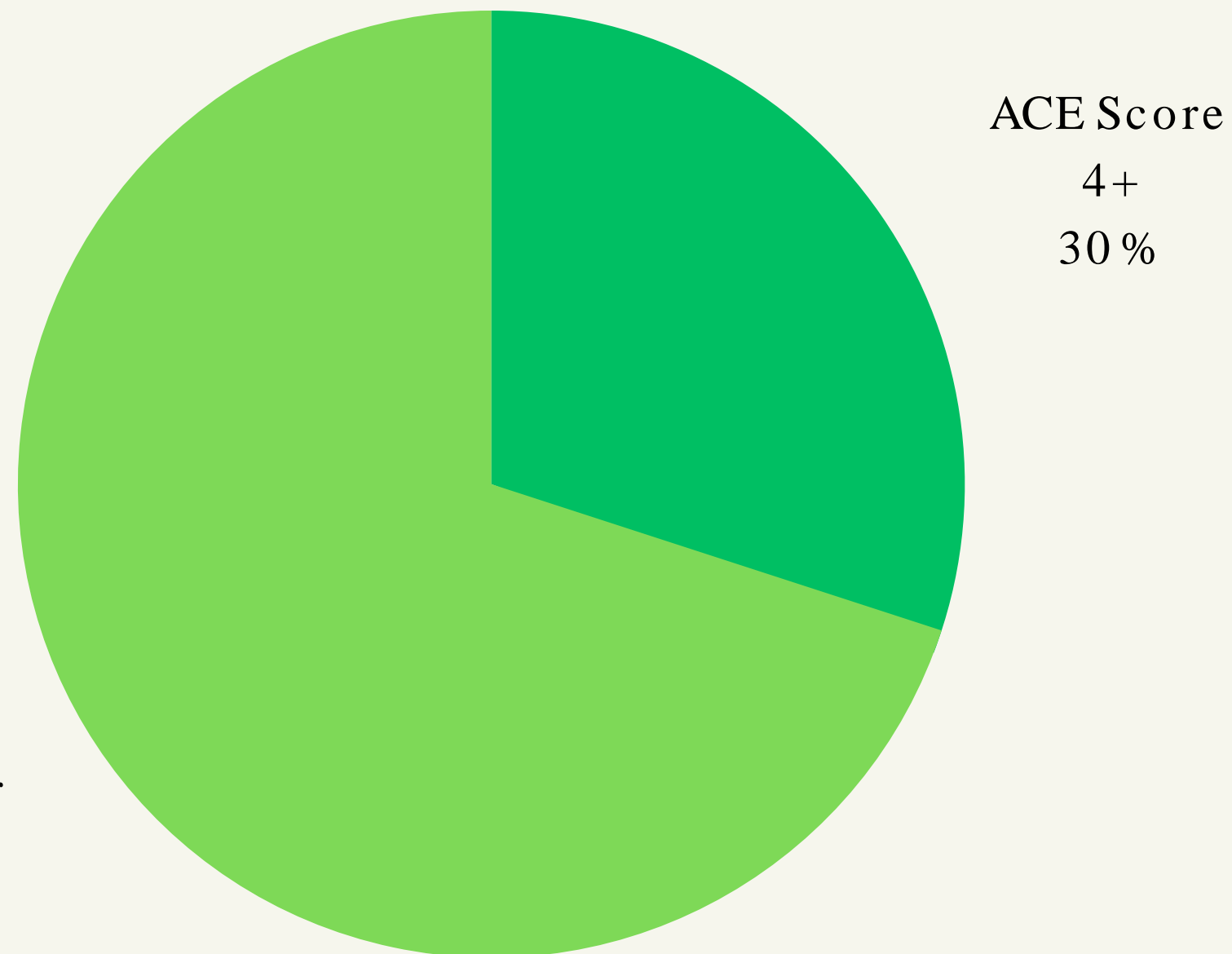
ACE SCORES ORANGE COUNTY SCHOOLS:

This data is based off of 3
school communities in Orange
County, IN with students
ranging from
7-12th grade



ORANGE COUNTY YOUTH COMBINED

ACES & PREGNANT MOTHERS



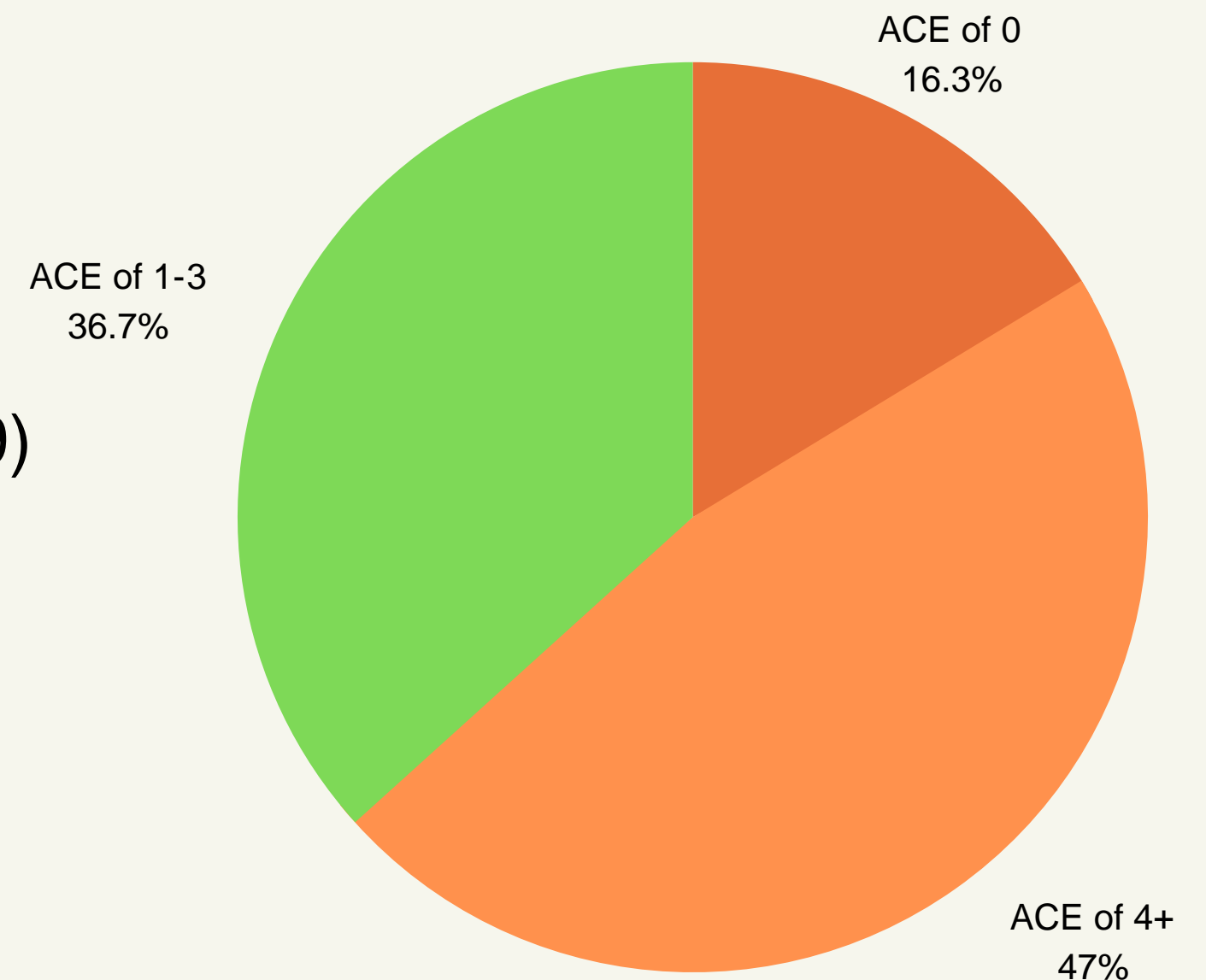
Dr. Yolanda Yoder, Chief Medical Officer at SICHHC, screened pregnant mothers.

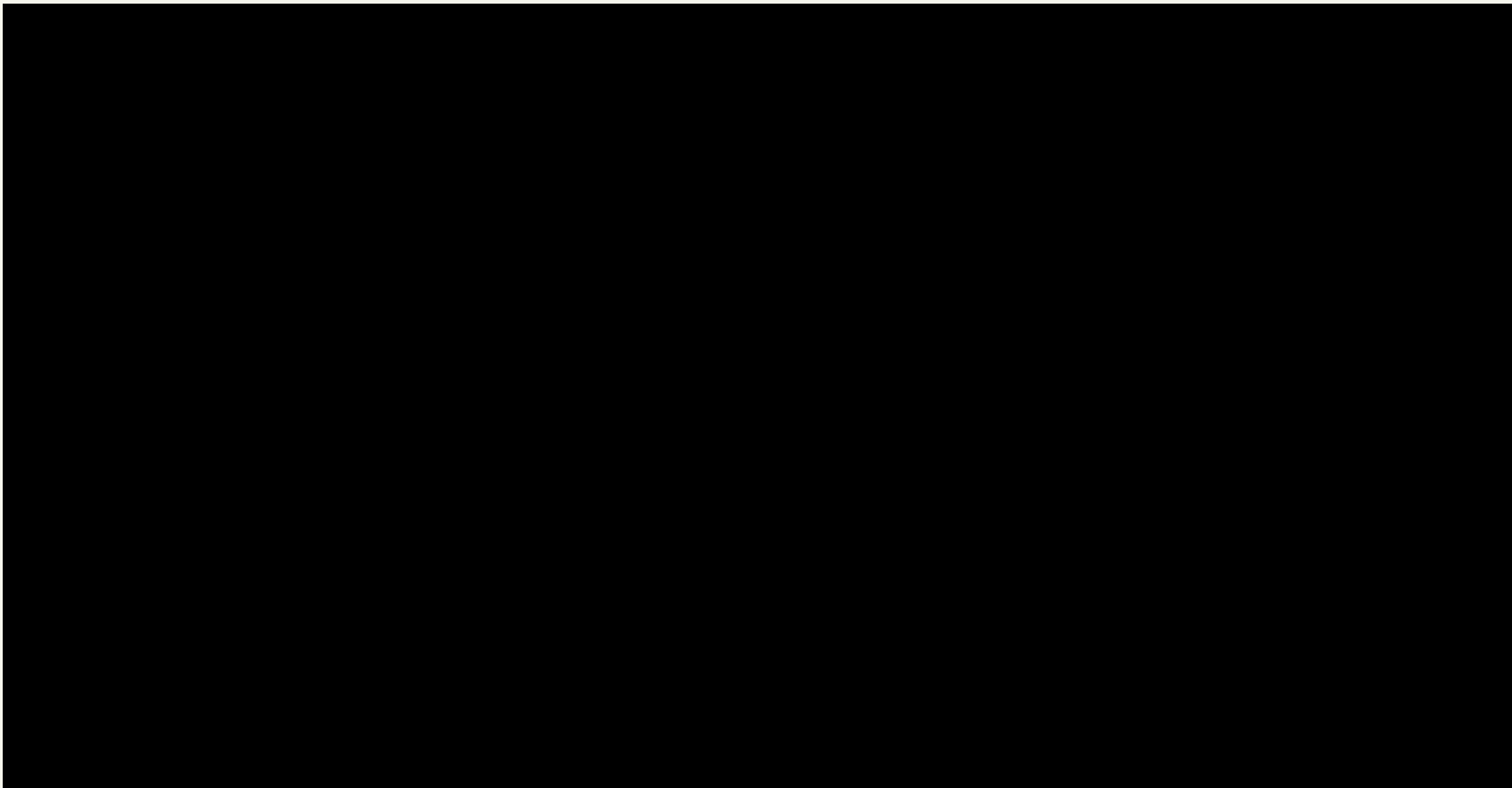
Results: 30% of pregnant mothers reported an ACEs score of four or more.

Adult Workforce ACE Scores

This project utilizes Adverse Childhood Experiences (ACEs) data from Southern Indiana Community Health Care (SICHHC) employee screenings to update the onboarding process to reflect Trauma-Informed Care (TIC) principles. This expands ACEs awareness and how they can be used to apply a TIC framework within the health care arena.

For SICHHC staff, parental divorce/separation was the most frequent ACE (n=30) and physical neglect was the least frequent ACE (n=9). Substance abuse (n=27), mental illness (n=23), emotional neglect (n=19), and emotional abuse (n=19) are the next four most frequent ACEs reported by 49 SICHHC staff who completed the survey within the survey timeframe. Overall, 16.3% or 8 SICHHC staff participants selfreported an ACEs score of 0 and 47% or 23 SICHHC staff participants reported an ACEs score of 4 or more.







Thrive Orange County



WHO ARE WE:

- 20+ partnerships
- upstream data - driven cross - sector
- community leaders committed to creating safety, stability, and nurturing community.

WHAT IS OUR FOCUS:

- The health & well - being of Orange County
- Adverse Childhood experiences
- Developing trauma - informed care practices
- Deploying evidence - based and evidence - informed intervention to prevent ACE and cultivate resilience

What is a Coalition?

Definition:

Coalition - the process by which parties (individuals, organizations, and nations) come together temporarily in a partnership to achieve a common goal.

Forming a coalition with other groups of similar values, interest, and goals allow members to combine resources and become more powerful than when they acted alone.



ACES and Community Coalitions

Pros

- promotes human empathy and connection .
- community pride
- increased resources
- enlarges support base and connections .
- brings together a diverse set of people .
- helps develop leadership skills



Barriers:

- system barriers
- economic barriers
- equity barriers
- funding
- time
- interest
- awareness
- communication
- lack of understanding

Coalition Building Experiences

What needs to happen in order to coalitions to be successful:

- Increase motivation & confidence
- Get up every day and do the work
- Understand power and control dynamics
- Frequent ego & reality check -ins
- Failure is a learning experience
- Implicit and explicit bias accountability



Confidence & Coalitions

- Think big ... act small .
- Small things matter .
- What do you have?
- Build on it
- Anchoring agency





Brandy Terrell, Thrive O.C.

Discussion and wrap-up



Resources



Thrive Website : <https://sichc.org/thrive/>

Additional videos :

<https://youtu.be/PTgRvOmBpzg>

<https://www.youtube.com/watch?v=vDiwFYycAvE>

<https://www.youtube.com/watch?v=1UbWMueBcPY>

REFERENCES

Center for Disease Control. (2019, November 5). Telebriefing: new vital signs report at least 5 of the top 10 leading causes of death are associated with adverse childhood experiences (aces):

What can be done to reduce negative health outcomes caused by aces?.

<https://link.gale.com/apps/doc/A605500736/ITOF?u=lou40555&sid=ebsco&xid=0b504d>

SAMHSA Trauma -Informed Care Framework

<https://store.samhsa.gov/sites/default/files/d7/priv/sma14-4884.pdf>

Southern Indiana Community Health Care. (2022, November). About us. <https://sichc.org/>

Southern Indiana Community Health Care. (2021) Thrive orange county initiatives document.

Thrive Orange County.

CONTACT INFORMATION

Dr. Brandy Terrell DSW, LCSW

Email:

bterrel@sichc.org

Phone : 812-345-5529

